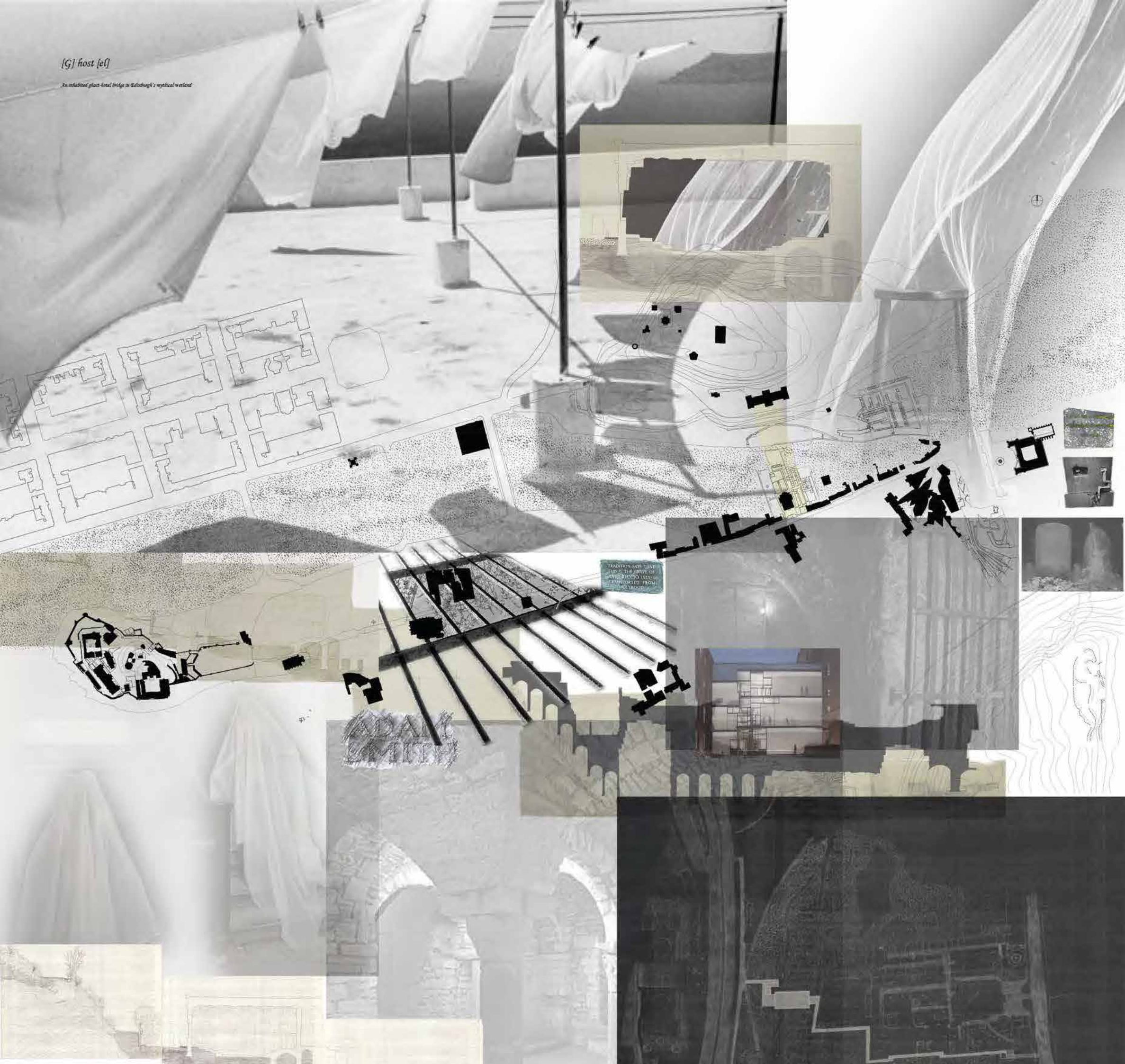


[G] host [e]

An industrial glass hotel in Edinburgh's mythical walled



Ghost /gəʊst/ origin gäst

Guest /ɡest/ origin Gast

Thorough Guest - Guest

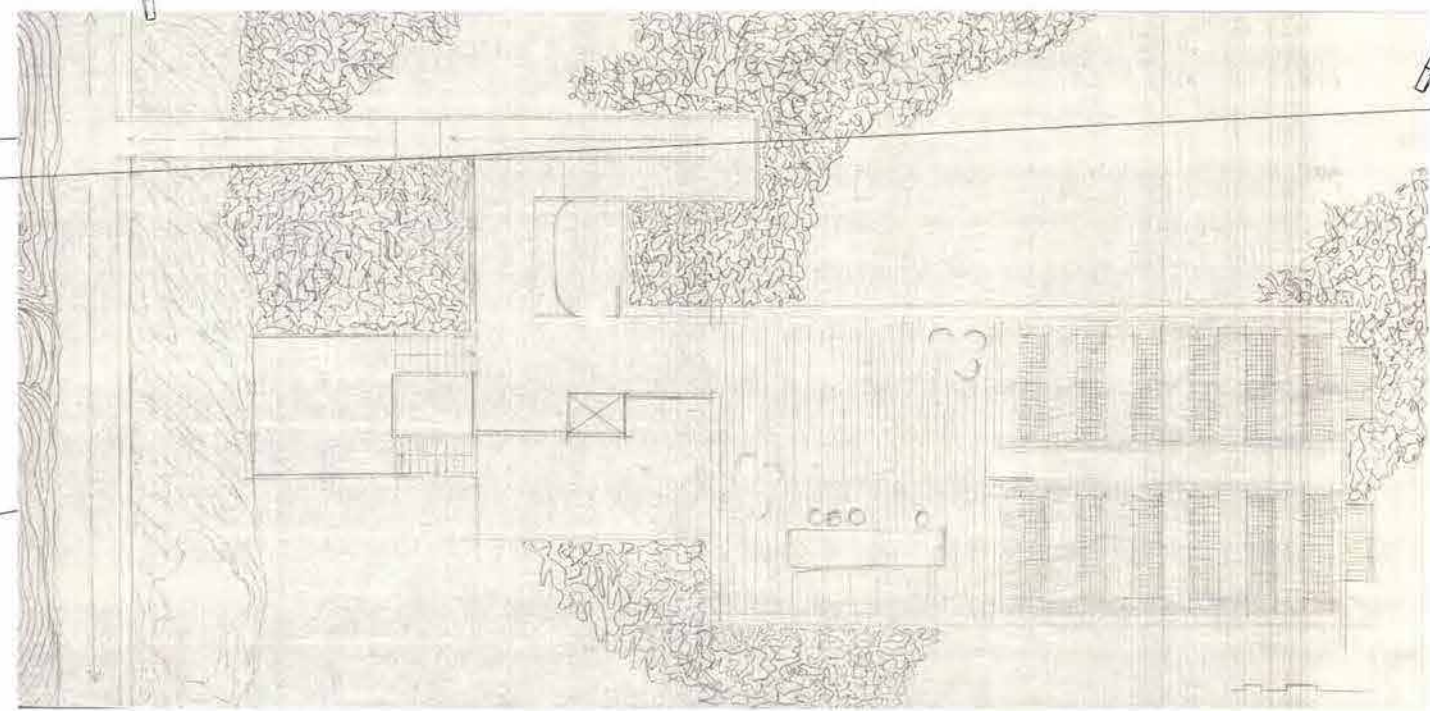
*Guests stay in a **guest-house** or hotel (house) and are **hosted** (ook) by the architecture, the local ghosts and the hotel staff.*

*The **table** as the 'heart of the home' represents the face as an architectural object and is a place for guests to gather.*

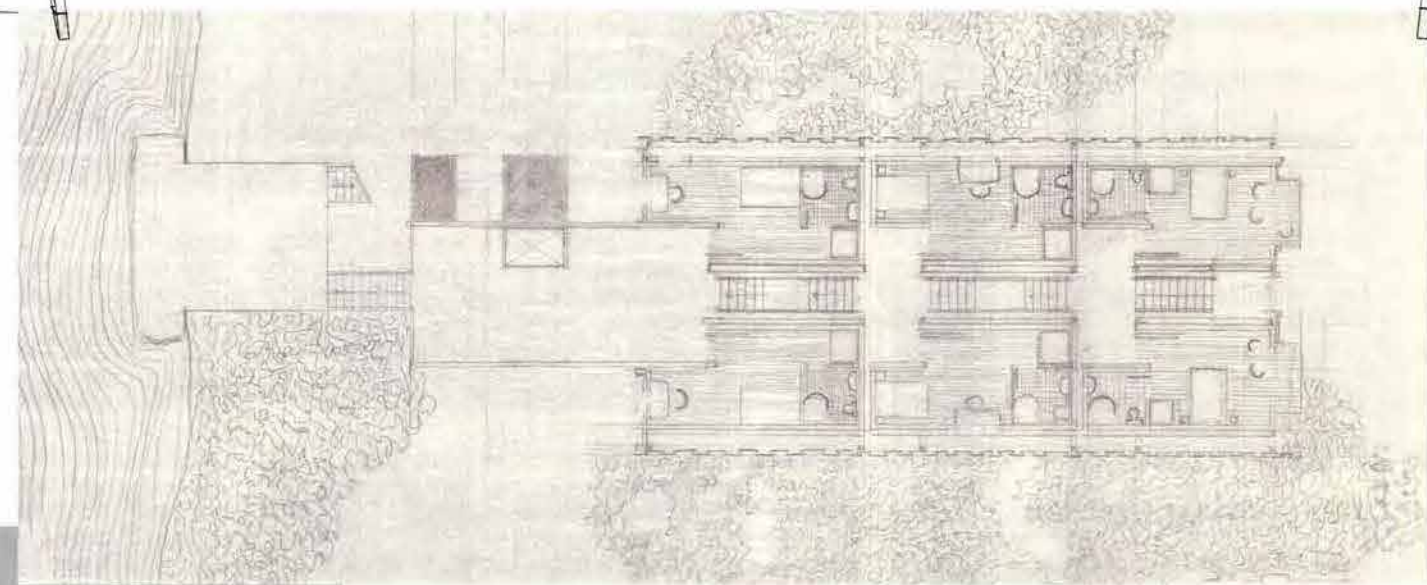


Section from Calton Hill through the Old Royal High School and the G[host] to Canongate Kirk.

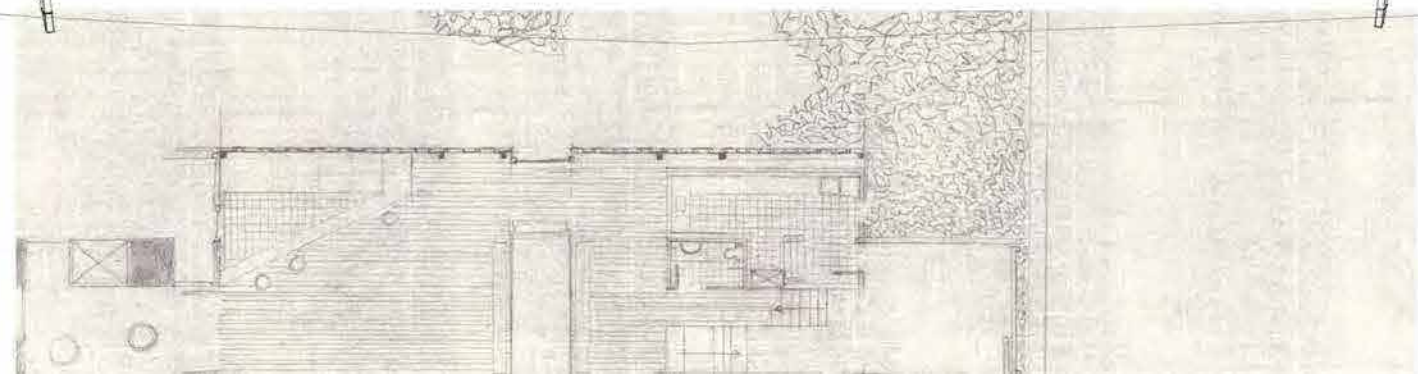
Bridge plan 1:1000

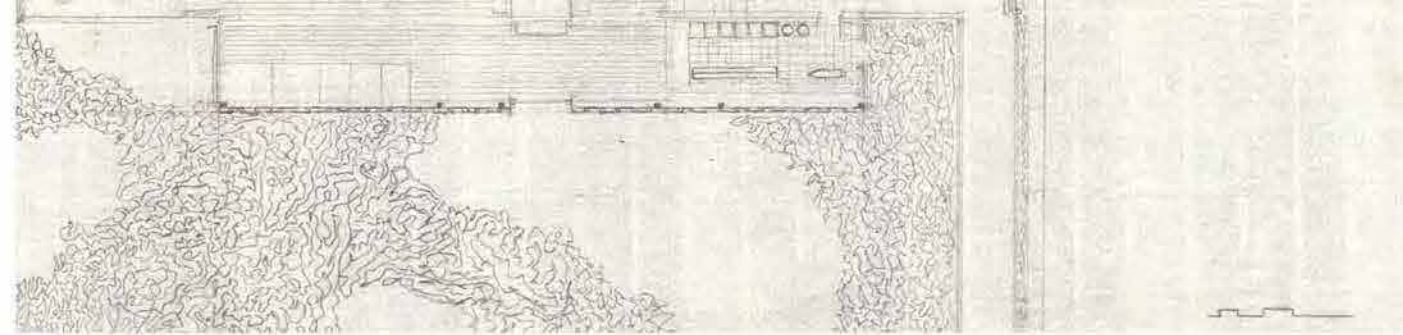


Roof Plan 1:100



First Floor Plan 1:100





Ground Floor Plan 1:100

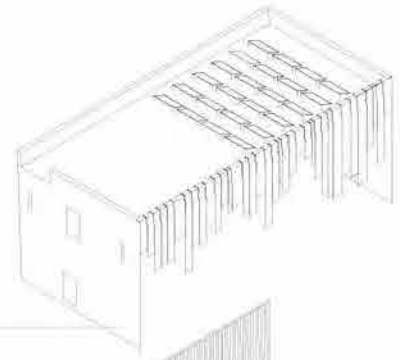


Exteriors

Technical Section 1:50

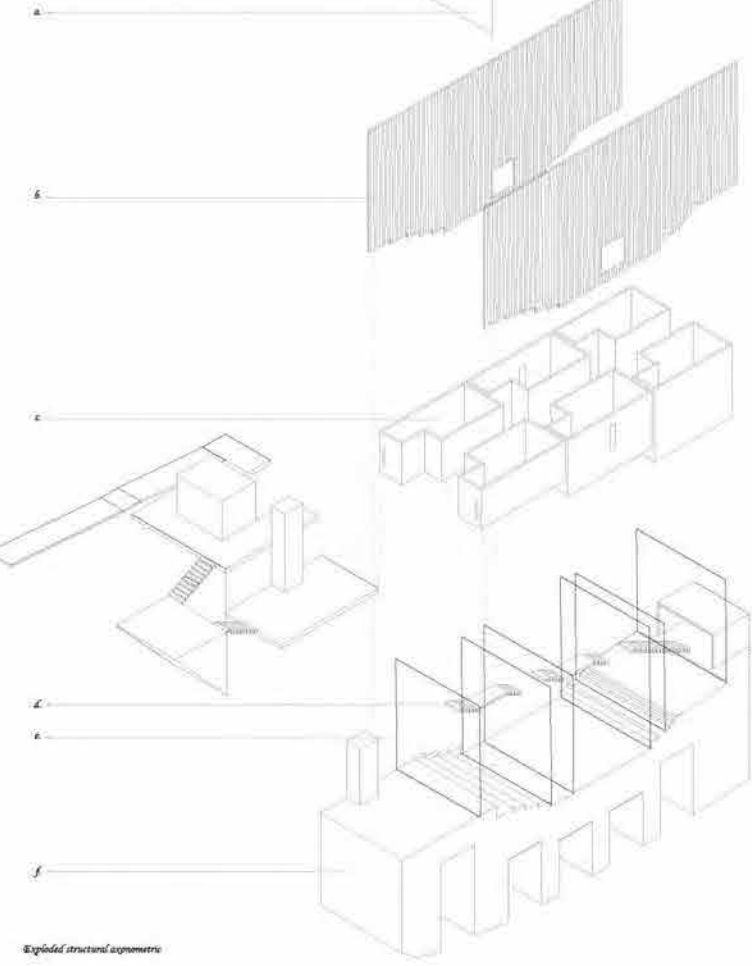
- 1. Color Thermal 1000 x 1400mm
- 2. Box Gutter
- 3. Roof detail
 - 3.1 Roof Slope
 - 3.2 Insulation
 - 3.3 Waterproofing
 - 3.4 Vapor Barrier
 - 3.5 Dimple Deck
 - 3.6 Drainage
- 4. Marble clad steel wall
 - 4.1 Marble cladding
 - 4.2 Steel structure
 - 4.3 Insulation
 - 4.4 Vapor barrier
 - 4.5 Drainage
- 5. Lead clink
 - 5.1 Lead clink
 - 5.2 Stone
 - 5.3 Mortar
 - 5.4 Dimple Deck
 - 5.5 Drainage
- 6. Internal Window detail
- 7. Staircase
 - 7.1 Staircase
 - 7.2 Landing
 - 7.3 Handrail
- 8. Timber Structure of flooring
 - 8.1 Timber Structure
 - 8.2 Insulation
 - 8.3 Vapor barrier
 - 8.4 Drainage

- 9. Rigid
 - 9.1 Rigid
 - 9.2 Insulation
 - 9.3 Vapor barrier
 - 9.4 Drainage
- 10. Exterior flood light
- 11. 2 Beam
 - 11.1 2 Beam
 - 11.2 Insulation
 - 11.3 Vapor barrier
 - 11.4 Drainage
- 12. Locally sourced sandstone face
- 13. Concrete foundation pad
 - 13.1 Concrete foundation pad
 - 13.2 Insulation
 - 13.3 Vapor barrier
 - 13.4 Drainage
- 14. 200 foundations
 - 14.1 200 foundations
 - 14.2 Insulation
 - 14.3 Vapor barrier
 - 14.4 Drainage
- 15. The Wetland



Anatomical Axonometric

- a. Lead 'Clink' [Roof]
- b. Disjunctive 'Glass' [Exterior Wall]
- c. 'Vitreous' 'Stone' [Interior Wall]
- d. 'Steel' 'Backbone' [Structure]
- e. Timber 'System' [Key Structural System]
- f. Stone 'Anchors' [Base of Bridge]



Exploded structural axonometric

