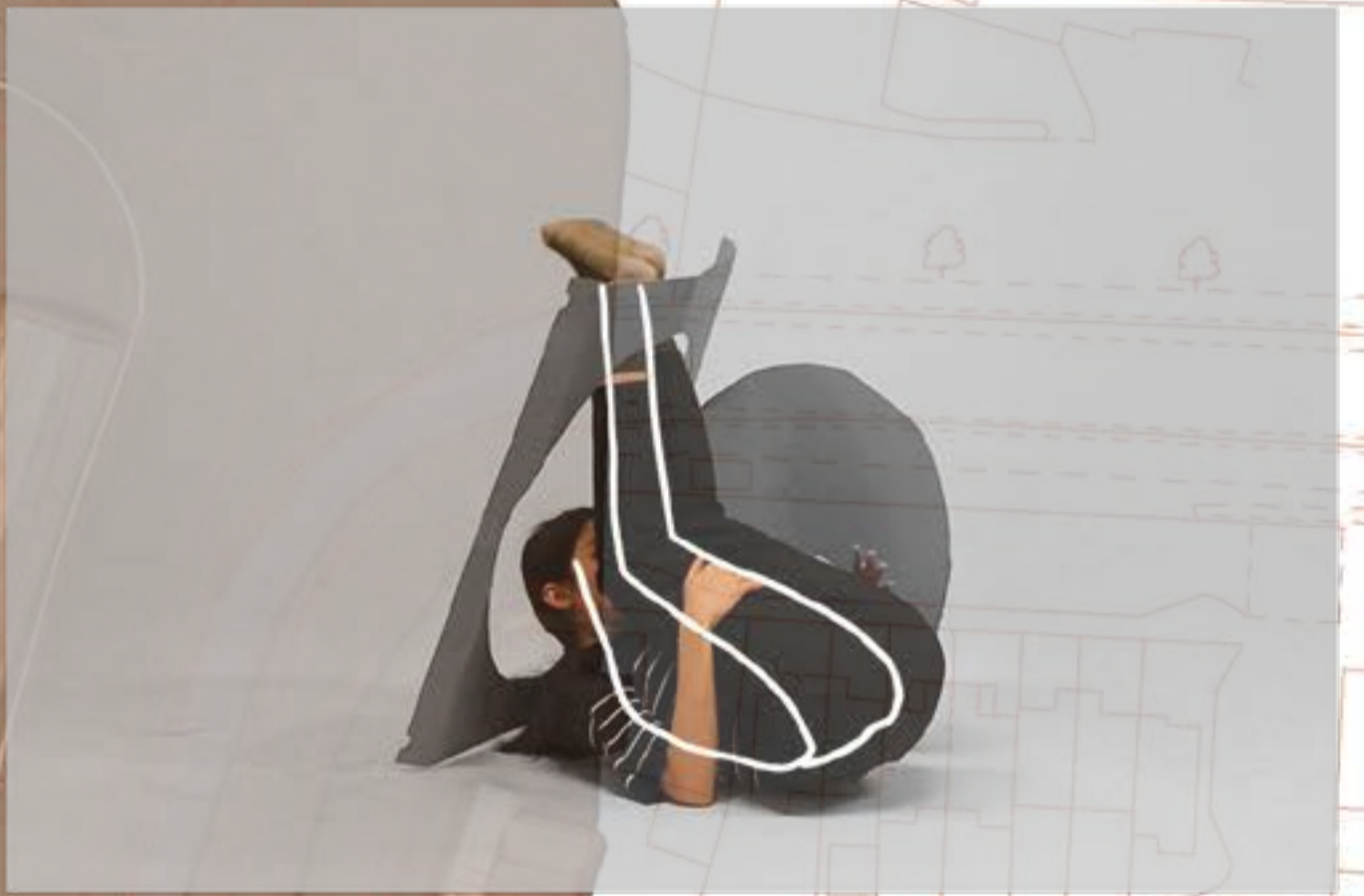
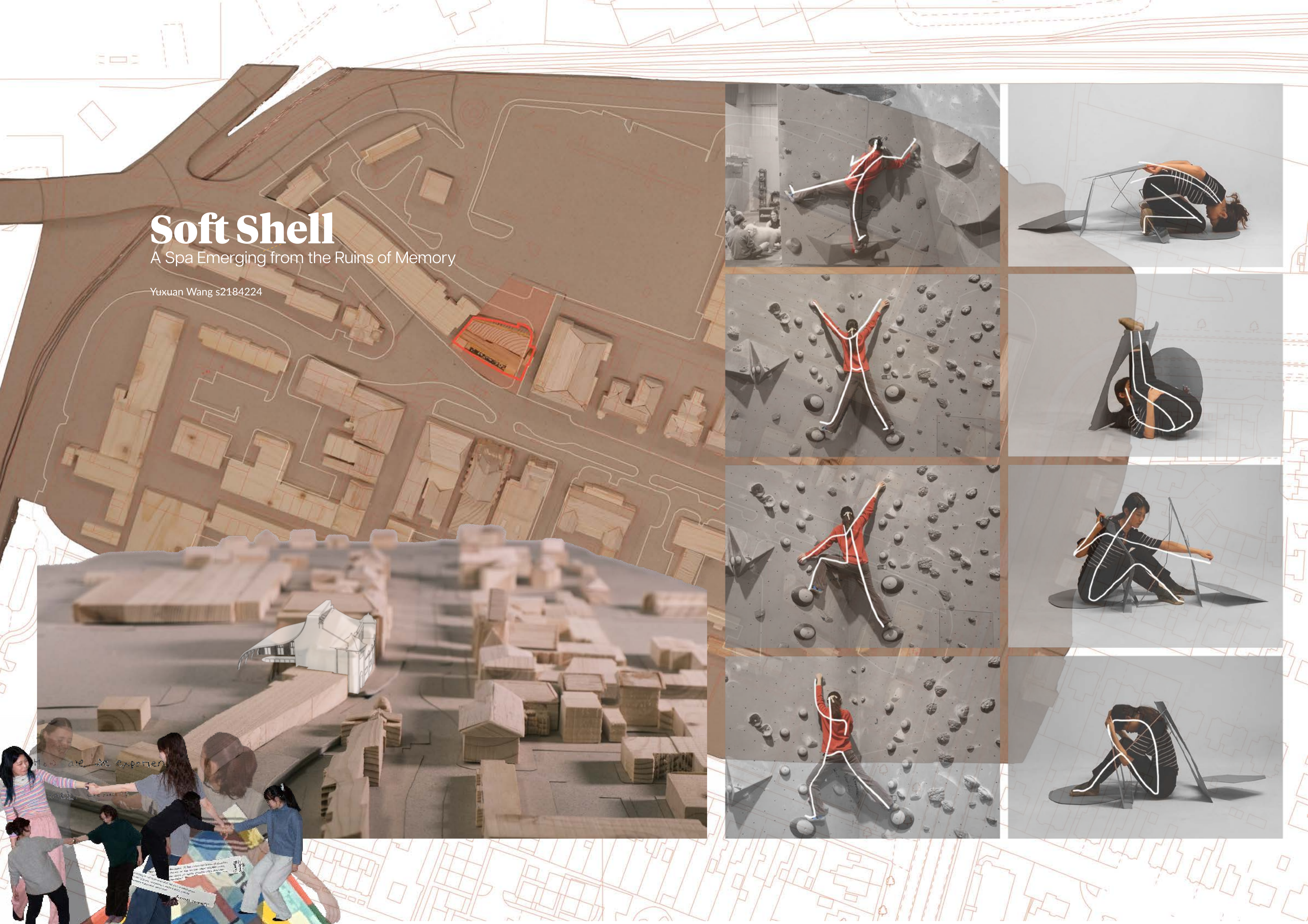


# Soft Shell

A Spa Emerging from the Ruins of Memory

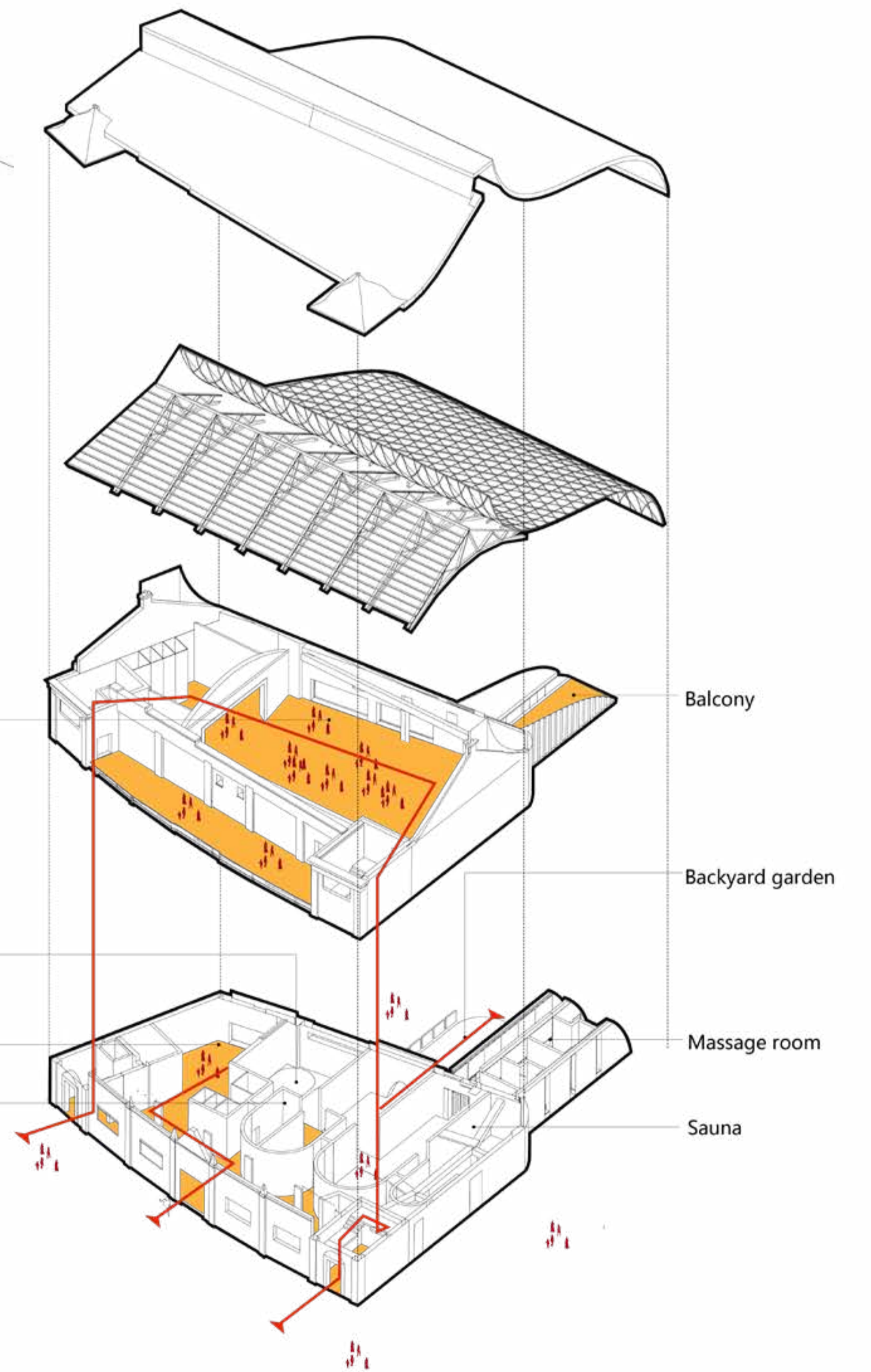
Yuxuan Wang s2184224





Located in the heart of Grangemouth, this project reimagines the town's future through a contemporary lens of health, renewal, and social care. Against the backdrop of the anticipated 2025 closure of its iconic refinery, the building offers a impactful response to the town's shifting identity—from industrial production to social and environmental healing. The redundant and neglected 'La Scala' cinema at Charing Cross junction has been designed into a multi-functional wellbeing centre, featuring a thermal spa, a dance studio and a cafe. Inspired by Grangemouth's history of open-air swimming pools and my early explorations with *Body in Motion – Space, Posture, Interaction*, water becomes both a physical and symbolic medium for recovery—sheltered from the cold winds of Scotland.

Weathering is woven into the design narrative. The building retains its original red brick façade, preserving memory while embracing change. As the town moves beyond oil and industry, this centre stands as a new landmark—where bodies, waters, and memories are given space to weather well.



Dance studio

Hot spring room

Cafe

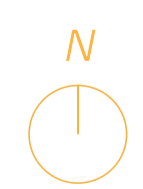
Chageing room

Balcony

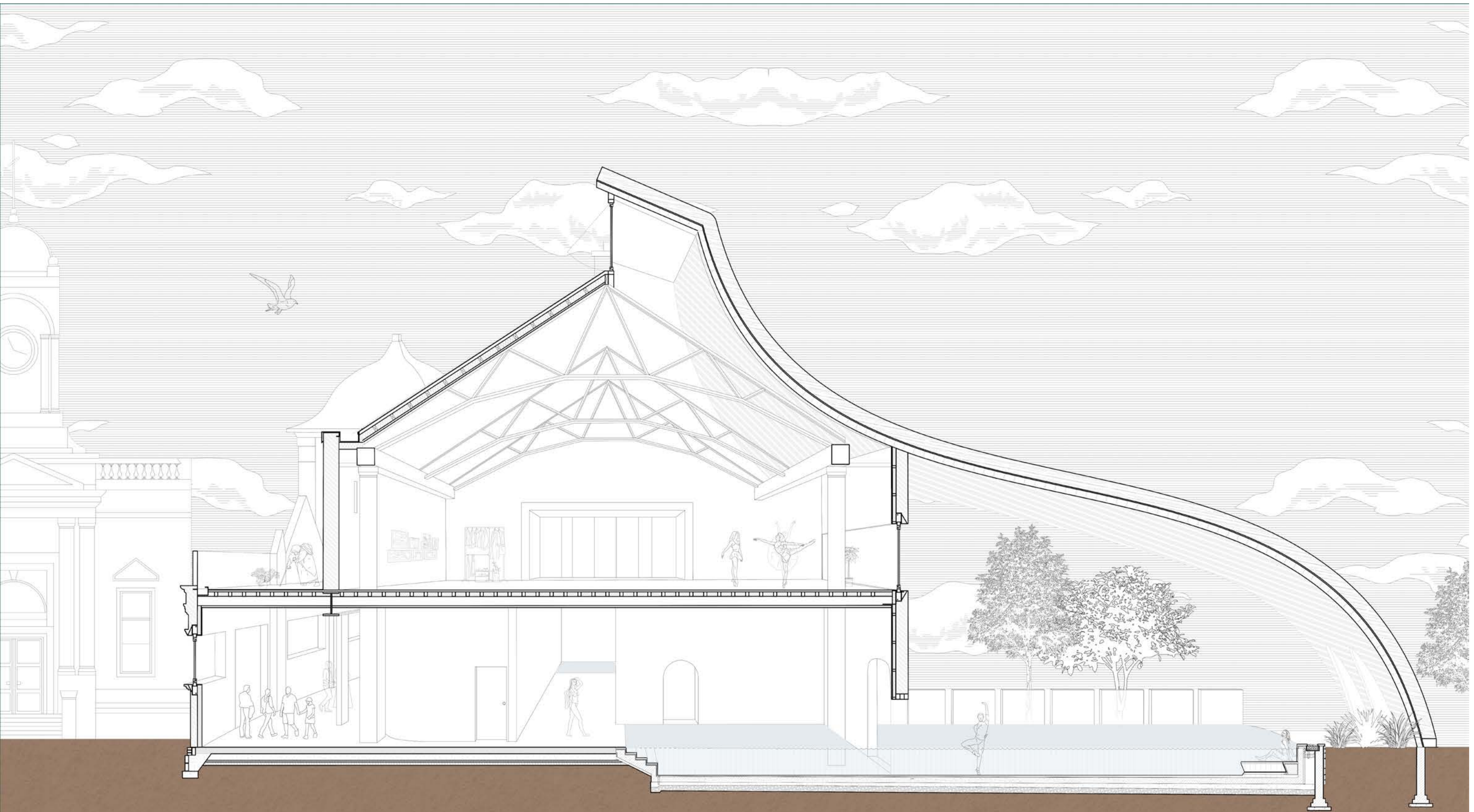
Backyard garden

Massage room

Sauna



1:100 Ground Floor Plan



**1. Pitched Roof build-up (from outside to inside)**

- Slater
- Roofing felt
- Timber board
- Secondary rafters
- Existing trusses

**2. Thatched Roof build-up (from outside to inside)**

- Thatch 400mm
- Timber boarding 18mm
- Breathable Membrane
- Woven bamboo structure
- Vapour control layer
- Ceiling lining

**3. Wall build-up (from outside to inside)**

- Existing solid brick wall 350mm
- Breathable membrane
- Wood fibre insulation
- Vapour control layer
- Internal lining

**4. Dance Floor build-up (from top to bottom)**

- Timber Dance floor finish
- Structural subfloor (plywood)
- Secondary glulam beams 150 mm
- Insulation between beams
- Primary glulam beams 300 mm
- Structural floor
- Vapour control layer
- Tiled ceiling finish

**5. Ground build-up (from top to bottom)**

- Stone floor finish
- Waterproofing layer
- Reinforced concrete structure layer
- Drainage layer (gravel + pipe)
- Compacted soil

1 3 5m  
1:50 Section